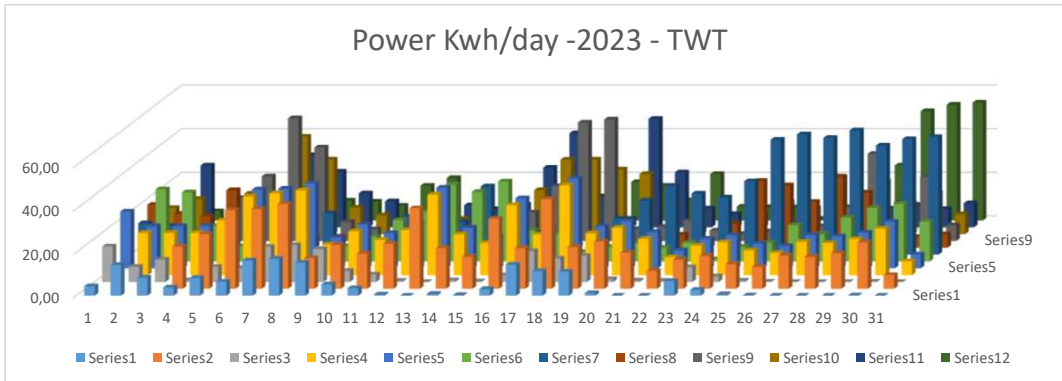


3. TWT investment plan withstands wind speed of 15m/s (higher wind speed - safe)

Summary table of daily electricity output in 2023

Date	v Cut in v P max v Cut out Vmax				Air density (at 25 degrees Celsius) A (m2)				Performance				
	1,2	4	10	15	1,185		314		20%				
	January	February	March	April	May	June	July	August	September	October	November	December	
31	4,34		16,39		26,16		14,48	19,80		12,09		4,38	
30	14,12		7,02	19,46	19,46	33,28	13,19	15,66	4,00	16,23	28,46	4,26	
29	8,30		10,31	19,46	19,46	31,91	3,31	14,64	2,63	4,45	6,27	4,86	
28	3,79	19,46	0,79	19,46	19,46	16,34	7,34	26,59	19,83	18,65	17,48	8,91	
27	8,19	25,25	6,96	25,25	25,25	7,07	11,85	0,56	29,74	16,44	3,14	9,89	
26	6,40	36,29	6,40	36,29	36,29	3,92	13,05	1,05	56,38	44,80	33,23	3,54	
25	16,25	36,72	16,25	37,77	36,72	4,48	7,85	4,86	42,98	34,32	25,66	9,18	
24	17,01	39,12	17,01	39,12	39,12	4,42	19,03	5,15	8,72	12,20	15,67	8,69	
23	15,18	14,14	15,18	14,14	14,14	7,05	8,41	5,71	5,39	8,69	11,99	6,82	
22	5,20	20,22	5,20	20,22	20,22	11,49	3,58	3,61	2,97	4,51	6,05	16,02	
21	3,44	16,28	3,44	16,28	16,28	19,05	17,55	2,72	1,42	6,27	11,12	19,57	
20	0,57	20,78	0,57	20,78	20,78	22,66	24,13	4,82	3,72	6,94	10,15	8,24	
19	0,00	37,13	0,00	37,13	37,13	35,49	15,12	6,30	3,11	5,75	8,40	3,22	
18	0,80	18,77	0,80	18,77	18,77	32,07	31,43	0,28	5,64	8,06	10,48	1,10	
17	0,26	14,82	0,26	14,82	14,82	36,90	21,58	3,85	13,18	20,30	27,42	11,92	
16	3,06	32,29	3,06	32,29	32,29	14,32	10,02	2,98	25,22	34,23	43,23	23,05	
15	14,28	18,76	14,28	18,76	18,76	12,81	2,75	1,31	54,41	34,34	14,26	18,86	
14	11,34	41,32	10,84	41,41	41,41	4,37	5,85	7,44	55,83	29,82	3,81	17,72	
13	11,06	19,29	11,99	19,29	19,29	6,76	16,58	5,23	5,50	27,67	49,84	16,01	
12	1,18	21,83	1,29	21,83	21,83	8,34	24,91	4,36	6,46	15,89	25,32	9,28	
11	0,02	16,72	0,67	16,72	16,72	6,29	31,71	6,08	9,39	9,05	8,71	21,40	
10	0,00	8,31	0,59	8,31	8,31	8,65	28,19	3,34	4,81	5,44	6,07	6,36	
9	6,75	13,46	6,79	13,58	13,64	1,02	26,42	11,24	3,22	4,72	6,22	6,17	
8	2,65	15,18	2,65	15,18	15,18	6,82	33,81	30,83	4,44	8,05	11,66	6,02	
7	0,65	11,41	0,65	11,41	11,41	8,62	52,86	28,77	8,55	8,61	8,68	0,63	
6	0,14	10,20	0,14	10,20	10,20	16,69	55,34	21,19	6,74	14,92	23,09	0,44	
5	0,00	15,35	0,01	15,35	15,35	12,58	53,67	32,82	15,64	12,18	8,71	1,20	
4	0,00	14,77	0,00	14,77	14,77	20,20	57,15	25,49	40,10	24,37	8,63	25,27	
3	0,00	16,45	0,00	16,60	16,45	24,71	50,21	9,67	17,96	14,16	10,37	50,21	
2	0,16	21,51	0,16	21,51	21,51	26,57	53,15	5,02	29,49	18,97	8,45	53,15	
1	0,00	6,35	0,00	6,35	6,35	18,33	54,12	6,28	7,21	9,15	11,09	54,12	
	155	582	160	623	648	463	769	318	495	491	464	431	

Investment acceptance costs **111.931.891** VND
 Generator capacity **2,38** KW
 Total generating capacity **5.597** KW
 Number of hours generating inst **2.350** hours/yea
 Total number of days of electricity generation **355** day/year
 Number of days without electricity generation **10** day/year
 Production expense: **47.627.520** VND
 6,4 hours/Day

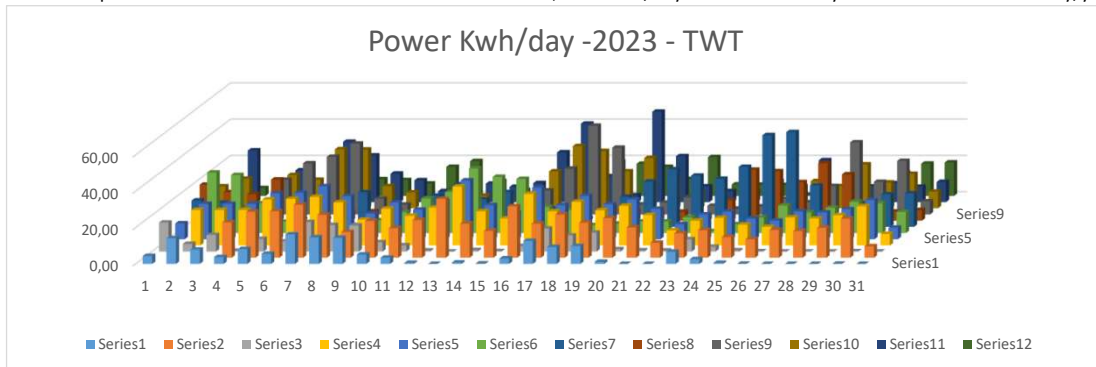


2. TWT investment plan is subject to wind speeds of 10m/s

Summary table of daily electricity output in 2023

Date	v Cut in v P max v Cut out Vmax				Air density (at 25 degrees Celsius) A (m2)			Performance											
	1,2	4	5,5	10	1,185	314	20%	January	February	March	April	May	June	July	August	September	October	November	December
31	4,34		15,99					19,80				8,70		14,48					4,38
30	14,12		4,24	19,46	19,46	33,28	13,19	15,66	4,00	16,23	28,46	4,26							
29	7,90		9,12	19,46	19,46	31,91	3,31	14,64	2,63	4,45	6,27	4,86							
28	3,79	19,46	0,40	19,46	19,46	16,34	7,34	22,62	19,04	18,26	17,48	8,91							
27	8,19	25,25	6,96	25,25	25,25	6,27	11,85	0,56	28,15	15,65	3,14	9,89							
26	5,60	25,58	5,60	25,58	25,58	3,52	13,05	1,05	31,77	32,50	33,23	3,54							
25	16,25	29,18	16,25	26,66	29,18	4,48	7,85	4,86	39,02	32,34	25,66	9,18							
24	14,63	23,64	14,63	23,64	23,64	4,42	19,03	5,15	8,72	12,20	15,67	8,69							
23	14,38	14,14	14,38	14,14	14,14	7,05	8,41	5,71	5,39	8,69	11,99	6,82							
22	5,20	20,22	5,20	20,22	20,22	11,49	3,58	3,61	2,97	4,51	6,05	16,02							
21	3,44	16,28	3,44	16,28	16,28	19,05	17,15	2,72	1,42	6,27	11,12	19,18							
20	0,57	20,78	0,57	20,78	20,78	22,66	23,34	4,02	3,72	6,94	10,15	8,24							
19	0,00	32,37	0,00	32,37	32,37	35,49	15,12	3,52	3,11	5,75	8,40	3,22							
18	0,80	18,77	0,80	18,77	18,77	30,88	19,13	0,28	5,64	8,06	10,48	1,10							
17	0,26	14,82	0,26	14,82	14,82	29,75	16,02	3,85	13,18	20,30	27,42	11,92							
16	3,06	28,32	3,06	28,32	28,32	14,32	10,02	2,98	25,22	34,23	43,23	19,08							
15	12,69	18,76	12,69	18,76	18,76	12,81	2,75	1,31	48,86	31,56	14,26	18,86							
14	9,36	23,85	8,86	23,95	23,95	4,37	5,85	7,44	36,78	20,30	3,81	17,72							
13	9,87	19,29	10,41	19,29	19,29	5,17	16,58	5,23	5,50	27,67	49,84	16,01							
12	1,18	21,83	1,29	21,83	21,83	6,35	24,91	4,36	6,46	15,89	25,32	9,28							
11	0,02	16,72	0,67	16,72	16,72	6,29	31,71	4,89	9,39	9,05	8,71	21,40							
10	0,00	8,31	0,59	8,31	8,31	8,65	28,19	2,54	4,81	5,44	6,07	6,36							
9	6,75	13,46	6,79	13,58	13,64	1,02	26,42	11,24	3,22	4,72	6,22	6,17							
8	2,65	15,18	2,65	15,18	15,18	4,83	33,02	28,05	4,44	8,05	11,66	6,02							
7	0,65	11,41	0,65	11,41	11,41	8,62	50,48	27,18	8,55	8,61	8,68	0,63							
6	0,14	10,20	0,14	10,20	10,20	15,11	52,16	21,19	6,74	14,92	23,09	0,44							
5	0,00	15,35	0,01	15,35	15,35	11,39	22,71	31,63	15,64	12,18	8,71	1,20							
4	0,00	14,77	0,00	14,77	14,77	13,85	5,95	25,49	39,71	24,17	8,63	3,84							
3	0,00	16,45	0,00	16,60	16,45	17,17	12,91	9,67	17,96	14,16	10,37	12,91							
2	0,16	21,51	0,16	21,51	21,51	16,25	17,83	5,02	29,49	18,97	8,45	17,83							
1	0,00	6,35	0,00	6,35	6,35	11,59	18,40	5,88	7,21	9,15	11,09	18,40							
	146	522	146	559	570	414	553	302	439	463	464	296							

Investment acceptance costs **97.488.846** Generator capacity **2,38 KW** Total generating capacity **4.874 KW**
 Number of hours generating inst **2.047** hours/yea Total number of days of **355** day/year
 Production expense: **47.627.520** VND **5,6** hours/Day Number of days without **10** day/year

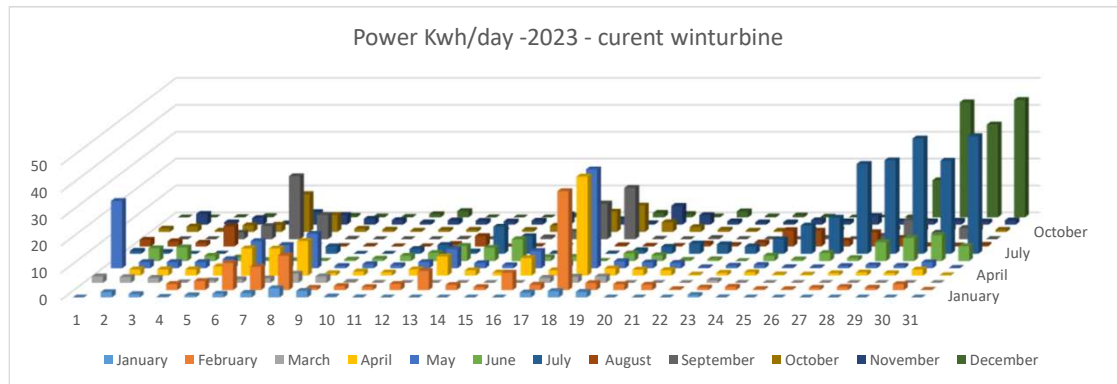


1. Traditional turbine option (area reduced 16 times, starting wind speed 3m/s and optimal speed at 12m/s, assumed efficiency 45%)

Summary table of daily electricity output in 2023

	v Cut in	v P max	v Cut out	Vmax	Air density (at 25 degrees Celsius) A (m2)		Performance					
	3	12	20	50	1,185	19,625	45%					
Date	January	February	March	April	May	June	July	August	September	October	November	December
31	0		2		25		1	2		1		0
30	2		2	2	2	5	1	2	0	2	4	0
29	1		2	2	2	5	0	1	0	0	1	0
28	0	2	0	2	2	2	0	7	2	2	2	1
27	1	3	1	3	3	1	1	0	5	3	0	1
26	1	10	1	10	10	0	0	0	23	14	5	0
25	2	9	2	10	9	0	0	0	9	6	4	1
24	3	13	3	13	13	0	3	0	0	1	2	0
23	2	1	2	1	1	1	0	0	0	1	2	0
22	0	2	0	2	2	1	0	0	0	0	1	1
21	0	1	0	1	1	2	2	0	0	1	2	2
20	0	2	0	2	2	3	3	1	0	1	1	0
19	0	7	0	7	7	6	1	4	0	1	1	0
18	0	2	0	2	2	5	10	0	0	1	1	0
17	0	1	0	1	1	8	7	0	1	2	4	1
16	0	6	0	6	6	1	0	0	3	4	6	5
15	2	2	2	2	2	2	0	0	13	8	2	2
14	2	37	2	37	37	0	0	0	19	10	1	2
13	2	3	2	3	3	3	1	0	0	4	7	1
12	0	2	0	2	2	2	3	0	0	2	4	0
11	0	2	0	2	2	0	4	1	0	1	1	2
10	0	0	0	0	0	1	4	1	0	0	1	0
9	1	1	1	1	1	0	3	1	0	0	1	1
8	0	1	0	1	1	2	5	6	0	1	2	0
7	0	0	0	0	0	1	10	6	0	1	1	0
6	0	0	0	0	0	3	13	2	0	2	3	0
5	0	1	0	1	1	1	33	5	1	1	1	0
4	0	1	0	1	1	7	35	3	7	4	1	14
3	0	1	0	1	1	9	43	0	2	2	1	43
2	0	2	0	2	2	10	35	0	4	3	1	35
1	0	0	0	0	0	5	44	1	0	1	2	44
	21	114	24	120	143	85	261	47	92	80	65	157

Investment acceptance costs **24.144.757** Generator capacity **9,04 KW** Total generating capacity **1.207 KW**
 Number of hours generating inst **134** hours/yea Total days of electricity generati **310** day/year
 Production expense: **180.835.740 VND** **0,4** hours/Day Number of days without **55** day/year



0. TWT plan maximizes capacity

Summary table of daily electricity output in 2023

Date	v Cut in v P max v Cut out Vmax				Air density (at 25 degrees Celsius) A (m2)		Performance					
	1,2	6	10	15	1,185	314	20%					
	January	February	March	April	May	June	July	August	September	October	November	December
31	4		20		70		15	21		13		4
30	16		14	22	22	39	13	16	4	16	28	4
29	11		14	22	22	39	3	15	3	4	6	5
28	4	22	1	22	22	18	7	46	23	20	17	9
27	9	29	8	29	29	9	12	1	38	20	3	12
26	10	67	10	67	67	5	13	1	141	87	33	4
25	17	66	17	75	66	5	8	5	65	45	26	9
24	26	83	26	83	83	4	23	5	9	12	16	9
23	21	14	21	14	14	8	8	6	5	9	12	7
22	5	21	5	21	21	12	4	4	3	5	6	16
21	3	16	3	16	16	20	19	3	1	6	11	24
20	1	23	1	23	23	27	29	7	4	7	10	8
19	0	52	0	52	52	44	15	13	3	6	8	3
18	1	20	1	20	20	39	68	0	6	8	10	1
17	0	16	0	16	16	60	43	4	13	20	27	12
16	3	51	3	51	51	15	10	3	26	35	43	35
15	20	21	20	21	21	15	3	1	92	53	14	20
14	18	88	18	88	88	4	6	7	129	66	4	18
13	17	21	19	21	21	10	17	5	6	28	50	16
12	1	23	1	23	23	15	25	4	6	16	25	9
11	0	18	1	18	18	7	33	9	9	9	9	22
10	0	8	1	8	8	9	32	5	5	5	6	6
9	8	14	8	14	14	1	27	12	3	5	6	7
8	3	15	3	15	15	12	43	46	4	8	12	6
7	1	11	1	11	11	10	74	44	9	9	9	1
6	0	10	0	10	10	22	94	22	7	15	23	0
5	0	16	0	16	16	15	137	40	16	12	9	1
4	0	15	0	15	15	37	180	27	55	32	9	77
3	0	17	0	17	17	47	142	10	22	16	10	142
2	0	22	0	22	22	54	147	5	34	21	8	147
1	0	6	0	6	6	36	144	8	7	9	11	144
	198	786	214	840	900	637	1.396	395	750	619	464	780

Investment acceptance costs
159.553.489 Generator capacity 8,04 KW Total generating capacity **7.978 KW**
 Number of hours generating inst 993 hours/yea Total number of days of electrici 355 day/year
 Production expense: **160.742.880 VND** 2,7 hours/Day Number of days without 10 day/year

